

GRUMMAN HELICAP

FROM SKETCH ON A PIECE OF
PAPERWORK FOR THE ORIGINAL
DESIGNER'S OFFICE

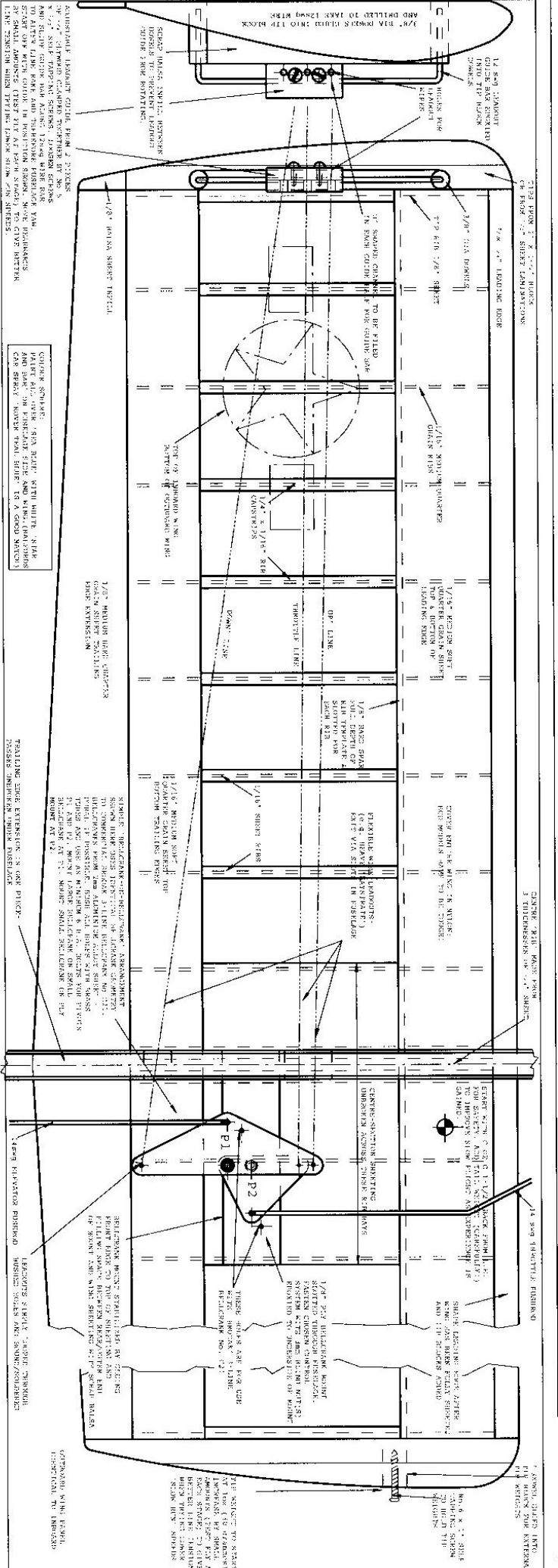
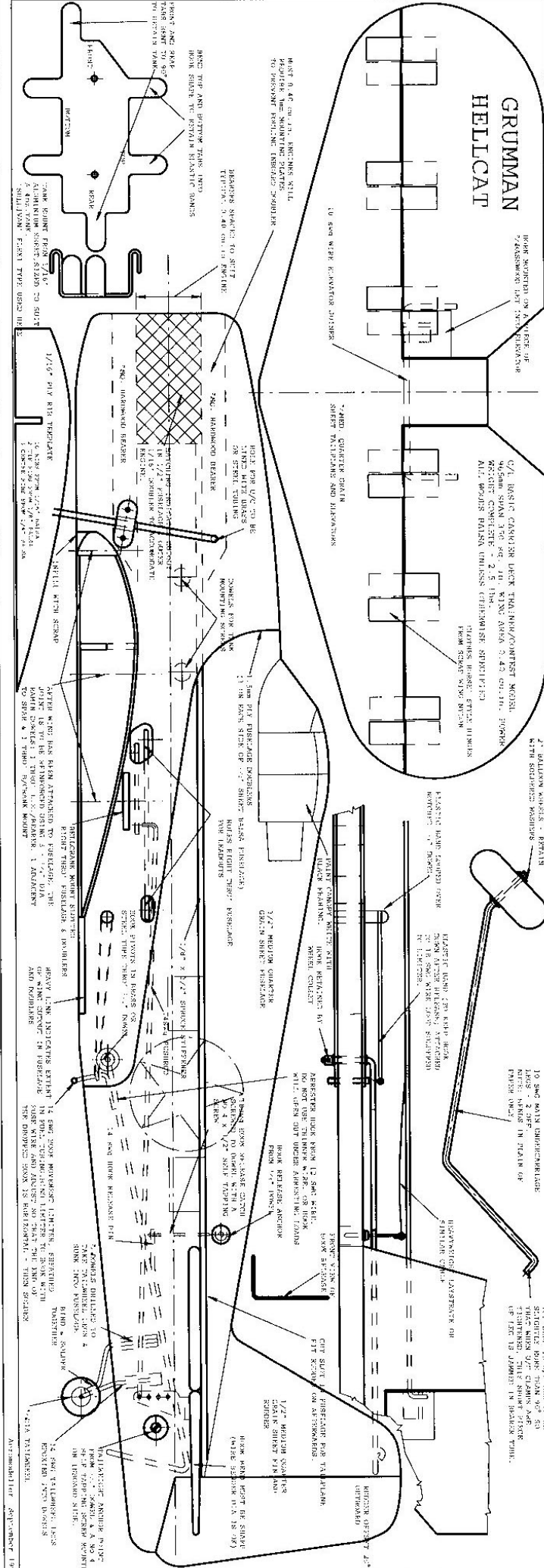
7.1 BATTERY HOUSING - RETAIN
WITH SECURED WOODS
9.0mm DIA. HOLES FOR 1/8" DIA. WOODS
WASHER COUPLERS - 2.5 DIA.
ALL WOODS MUST BE CHEMISE
TREATED TO PREVENT ROT
FROM MOISTURE AND INSECTS

13.0mm DIA. HOLES FOR
1/8" DIA. WOODS
WASHER COUPLERS - 2.5 DIA.
ALL WOODS MUST BE CHEMISE
TREATED TO PREVENT ROT
FROM MOISTURE AND INSECTS

14.0mm DIA. HOLES FOR
1/8" DIA. WOODS
WASHER COUPLERS - 2.5 DIA.
ALL WOODS MUST BE CHEMISE
TREATED TO PREVENT ROT
FROM MOISTURE AND INSECTS

15.0mm DIA. HOLES FOR
1/8" DIA. WOODS
WASHER COUPLERS - 2.5 DIA.
ALL WOODS MUST BE CHEMISE
TREATED TO PREVENT ROT
FROM MOISTURE AND INSECTS

16.0mm DIA. HOLES FOR
1/8" DIA. WOODS
WASHER COUPLERS - 2.5 DIA.
ALL WOODS MUST BE CHEMISE
TREATED TO PREVENT ROT
FROM MOISTURE AND INSECTS



1.0mm DIA. HOLES FOR 1/8" DIA. WOODS WASHER COUPLERS - 2.5 DIA. ALL WOODS MUST BE CHEMISE TREATED TO PREVENT ROT FROM MOISTURE AND INSECTS

2.0mm DIA. HOLES FOR 1/8" DIA. WOODS WASHER COUPLERS - 2.5 DIA. ALL WOODS MUST BE CHEMISE TREATED TO PREVENT ROT FROM MOISTURE AND INSECTS

3.0mm DIA. HOLES FOR 1/8" DIA. WOODS WASHER COUPLERS - 2.5 DIA. ALL WOODS MUST BE CHEMISE TREATED TO PREVENT ROT FROM MOISTURE AND INSECTS

4.0mm DIA. HOLES FOR 1/8" DIA. WOODS WASHER COUPLERS - 2.5 DIA. ALL WOODS MUST BE CHEMISE TREATED TO PREVENT ROT FROM MOISTURE AND INSECTS

5.0mm DIA. HOLES FOR 1/8" DIA. WOODS WASHER COUPLERS - 2.5 DIA. ALL WOODS MUST BE CHEMISE TREATED TO PREVENT ROT FROM MOISTURE AND INSECTS

6.0mm DIA. HOLES FOR 1/8" DIA. WOODS WASHER COUPLERS - 2.5 DIA. ALL WOODS MUST BE CHEMISE TREATED TO PREVENT ROT FROM MOISTURE AND INSECTS

7.0mm DIA. HOLES FOR 1/8" DIA. WOODS WASHER COUPLERS - 2.5 DIA. ALL WOODS MUST BE CHEMISE TREATED TO PREVENT ROT FROM MOISTURE AND INSECTS

8.0mm DIA. HOLES FOR 1/8" DIA. WOODS WASHER COUPLERS - 2.5 DIA. ALL WOODS MUST BE CHEMISE TREATED TO PREVENT ROT FROM MOISTURE AND INSECTS

9.0mm DIA. HOLES FOR 1/8" DIA. WOODS WASHER COUPLERS - 2.5 DIA. ALL WOODS MUST BE CHEMISE TREATED TO PREVENT ROT FROM MOISTURE AND INSECTS

10.0mm DIA. HOLES FOR 1/8" DIA. WOODS WASHER COUPLERS - 2.5 DIA. ALL WOODS MUST BE CHEMISE TREATED TO PREVENT ROT FROM MOISTURE AND INSECTS