

3/32" DIAMETER ALUMINUM TUBING
ANGLED THROUGH BOTTOM SKIN

LEADING EDGE 5/8" x 1" TAPERED

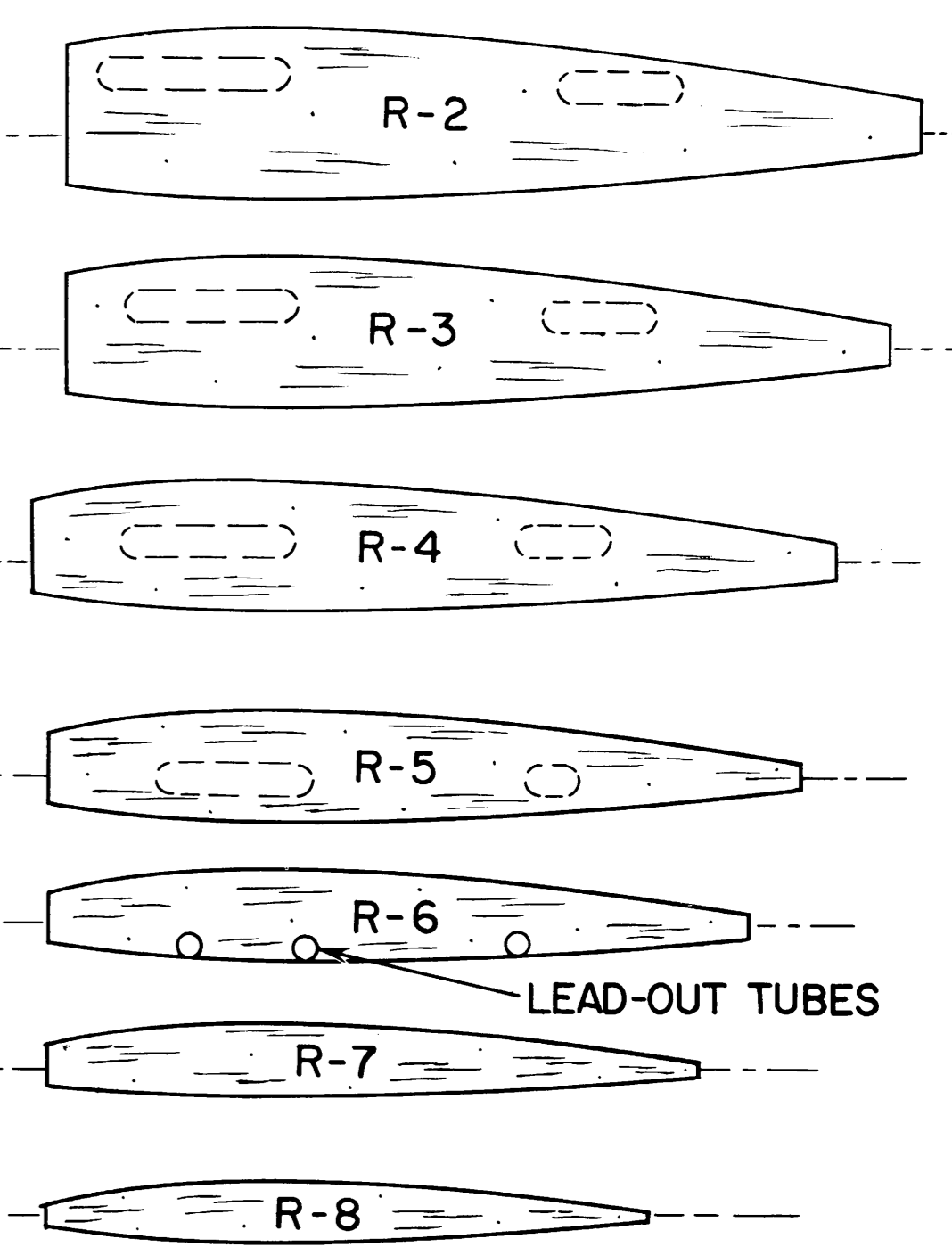
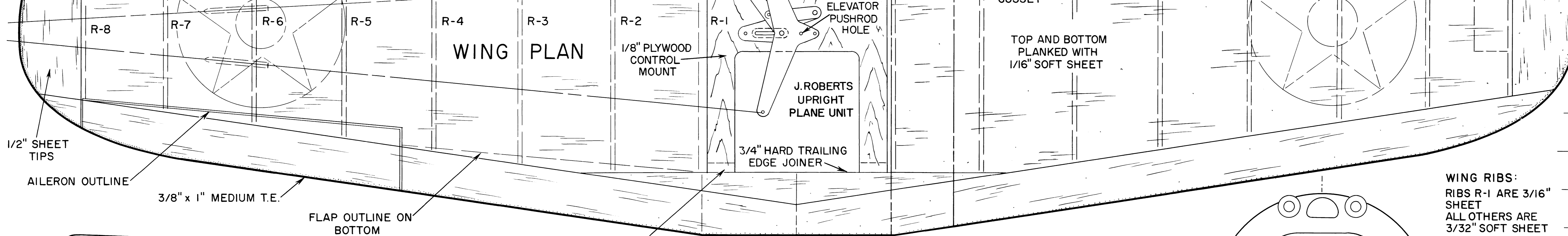
PINE DIHEDRAL BRACE

WING WALKS EACH SIDE

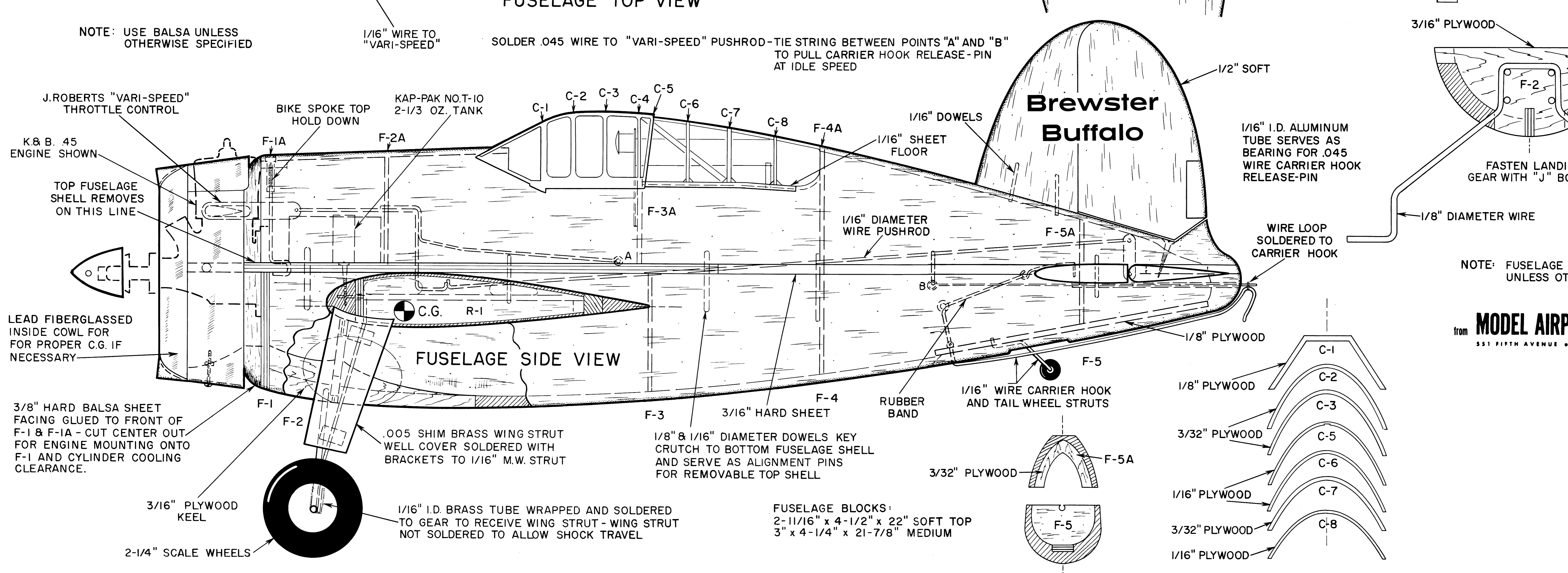
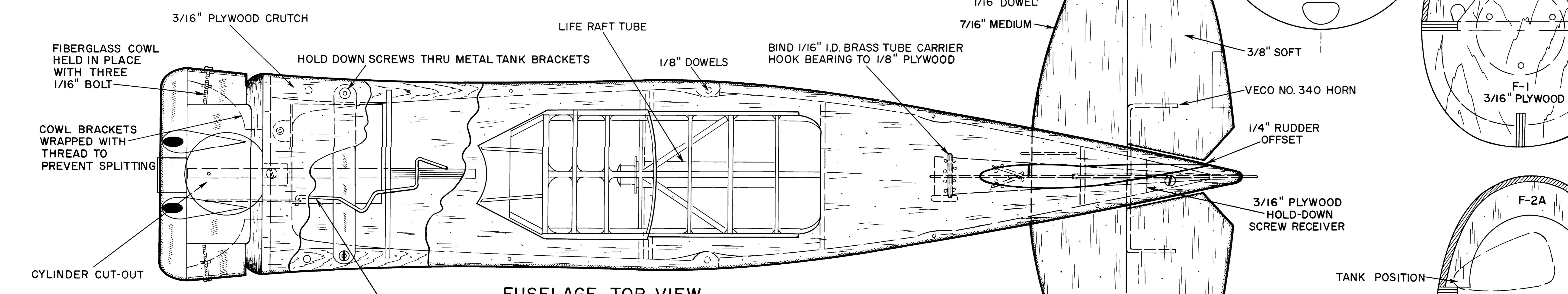
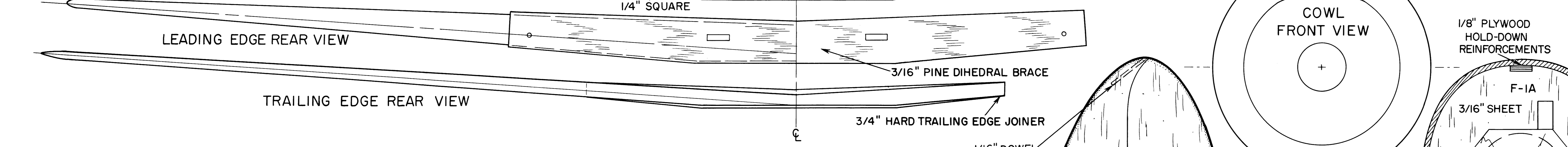
LANDING GEAR RETRACTION WELL OUTLINE
IMBEDDED L.G. STRUT

1-1/2 OZ. BALLAST

RIB LAYOUTS



WING RIBS:
RIBS R-1 ARE 3/16" SHEET
ALL OTHERS ARE 3/32" SOFT SHEET

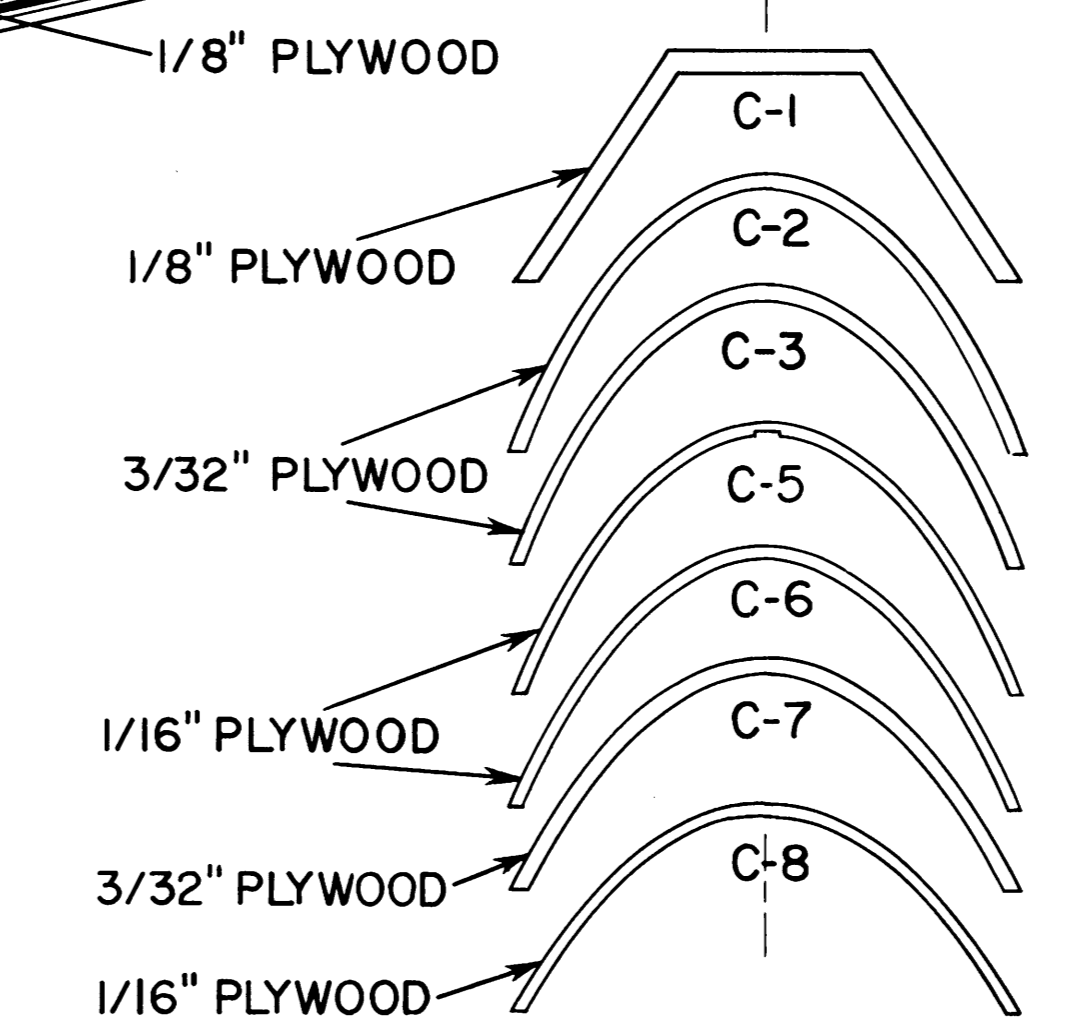


NOTE: USE BALSA UNLESS OTHERWISE SPECIFIED

1/16" WIRE TO "VARI-SPEED"

SOLDER .045 WIRE TO "VARI-SPEED" PUSHROD - TIE STRING BETWEEN POINTS "A" AND "B" TO PULL CARRIER HOOK RELEASE-PIN AT IDLE SPEED

FUSELAGE BLOCKS:
2-1 1/16" x 4-1/2" x 22" SOFT TOP
3" x 4-1/4" x 21-7/8" MEDIUM



from **MODEL AIRPLANE NEWS**
551 FIFTH AVENUE • NEW YORK 17, N.Y.